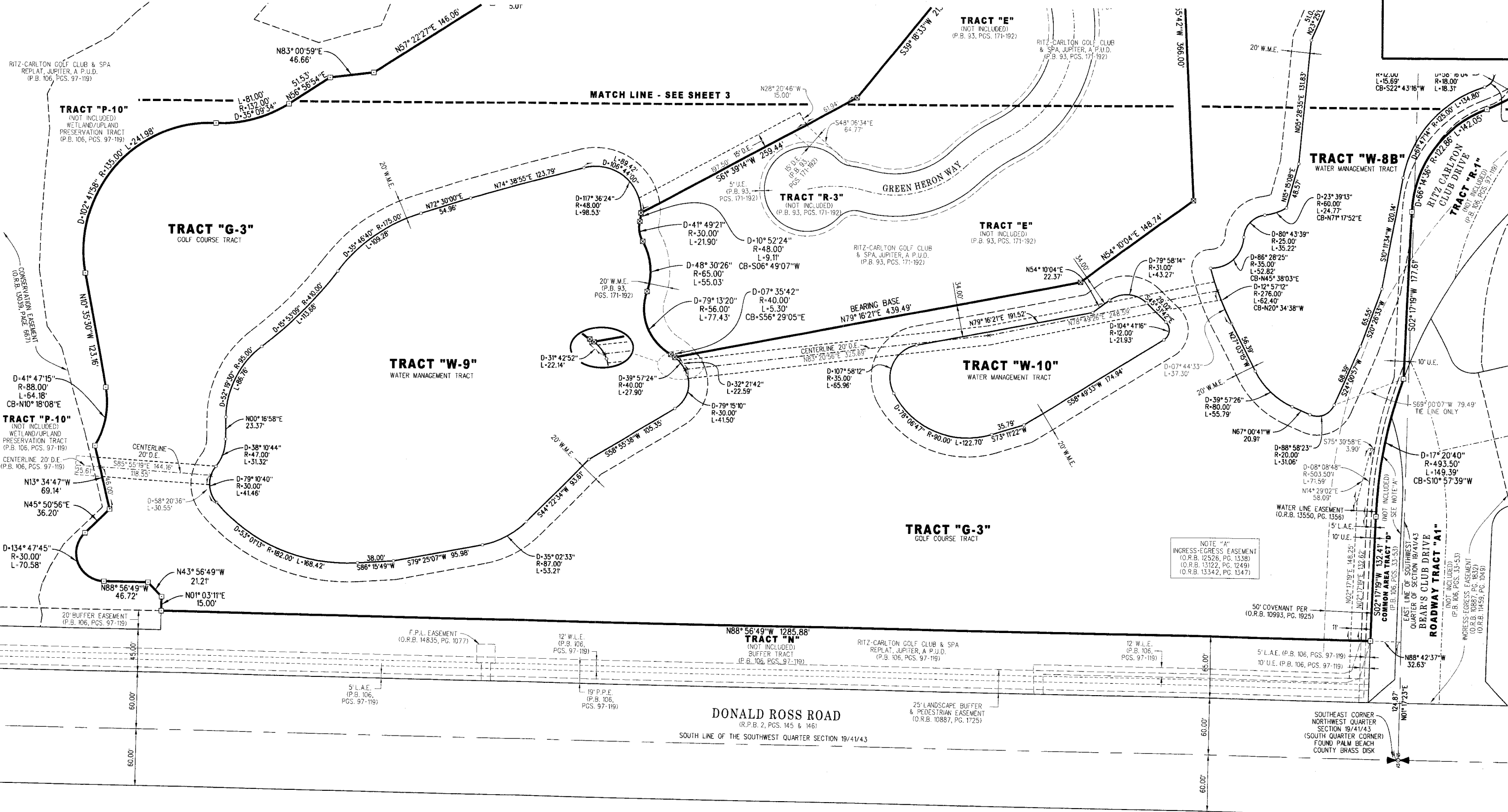
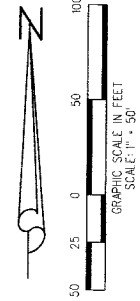
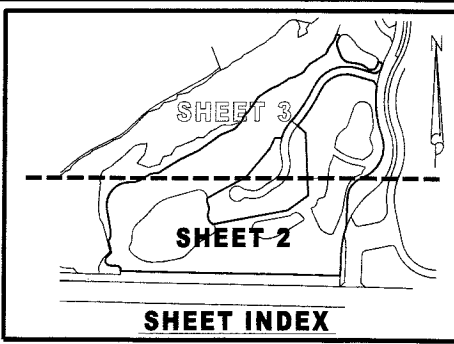


RITZ-CARLTON GOLF CLUB & SPA REPLAT NO. 3, JUPITER, A P.U.D.

BEING A REPLAT OF GOLF COURSE TRACT "G-3", WATER MANAGEMENT TRACTS "W-8" AND "W-9",
AS SHOWN ON THE PLAT OF RITZ-CARLTON GOLF CLUB & SPA REPLAT, JUPITER, A P.U.D.,
AS RECORDED IN PLAT BOOK 106, PAGES 97 THROUGH 119,
PUBLIC RECORDS OF PALM BEACH COUNTY FLORIDA.
LYING IN SECTION 19, TOWNSHIP 41 SOUTH, RANGE 43 EAST,
TOWN OF JUPITER, PALM BEACH COUNTY, FLORIDA
MAY 2012
SHEET 2 OF 3



NOTE "A"
INGRESS-EGRESS EASEMENT
(O.R.B. 12526, PG. 1338)
(O.R.B. 13122, PG. 1249)
(O.R.B. 13342, PG. 1347)

- LEGEND**
- = DENOTES A SET 4"x4" CONCRETE MONUMENT STAMPED "PRM LB 4431" PERMANENT REFERENCE MONUMENT (P.R.M.).
 - ⊗ = DENOTES A FOUND 4"x4" CONCRETE MONUMENT STAMPED "PRM LB 4431" PERMANENT REFERENCE MONUMENT (P.R.M.).

LIDBERG LAND SURVEYING, INC.
715 West Indiantown Road, Suite 200,
Jupiter, Florida 33458 TEL. 561-746-8454

| | | | |
|------|---|--------------|--------------------|
| CAD. | K:\JUST \ 194143 \ RITZ \ 03-003-306A \ 03-003-306A.DGN | | |
| REF. | | | |
| FLD. | K.F. | FB. | PG. |
| OFF. | R.J.W. | | |
| CKD. | D.C.L. | SHEET 2 OF 3 | DWG. 003-003PP |
| | | | DATE JANUARY, 2012 |
| | | | JOB 03-003-306A |